

Inspiron 14 7000 Series Owner's Manual

Computer model: Inspiron 7437
Regulatory model: P42G
Regulatory type: P42G001



Notes, Cautions, and Warnings



NOTE: A NOTE indicates important information that helps you make better use of your computer.



CAUTION: A CAUTION indicates potential damage to hardware or loss of data if instructions are not followed.



WARNING: A WARNING indicates a potential for property damage, personal injury, or death.

© 2013 Dell Inc.

Trademarks used in this text: Dell™, the DELL logo, and Inspiron™ are trademarks of Dell Inc.

2013 - 09 Rev. A00

Contents


Before Working Inside Your Computer	7
Before You Begin	7
Recommended Tools	7
Safety Instructions	8
After Working Inside Your Computer	9
Removing the Base Cover	10
Procedure	10
Replacing the Base Cover	11
Procedure	11
Removing the Battery	12
Prerequisites	12
Procedure	12
Replacing the Battery	13
Procedure	13
Postrequisites	13
Removing the Speakers	14
Prerequisites	14
Procedure	14
Replacing the Speakers	15
Procedure	15
Postrequisites	15
Removing the Wireless Card	16
Prerequisites	16
Procedure	16
Replacing the Wireless Card	17
Procedure	17
Postrequisites	17

Removing the Coin-Cell Battery	18
Prerequisites	18
Procedure	18
Replacing the Coin-Cell Battery	19
Procedure	19
Postrequisites	19
Removing the Fan	20
Prerequisites	20
Procedure	20
Replacing the Fan	21
Procedure	21
Postrequisites	21
Removing the Power-Adapter Port	22
Prerequisites	22
Procedure	22
Replacing the Power-Adapter Port	24
Procedure	24
Postrequisites	24
Removing the System Board	25
Prerequisites	25
Procedure	25
Replacing the System Board	28
Procedure	28
Postrequisites	28
Entering the Service Tag in the BIOS	28
Removing the mSATA Card	29
Prerequisites	29
Procedure	29
Replacing the mSATA Card	30
Procedure	30
Postrequisites	30


Removing the Thermal-Cooling Assembly	31
Prerequisites	31
Procedure	31
Replacing the Thermal-Cooling Assembly	33
Procedure	33
Postrequisites	33
Removing the Keyboard	34
Prerequisites	34
Procedure	34
Replacing the Keyboard	36
Procedure	36
Postrequisites.	36
Removing the Display Assembly	37
Prerequisites	37
Procedure	37
Replacing the Display Assembly	41
Procedure	41
Postrequisites	41
Removing the Palm Rest	42
Prerequisites	42
Procedure	42
Replacing the Palm Rest	45
Procedure	45
Postrequisites	46
Flashing the BIOS	47

Before Working Inside Your Computer

Before You Begin

 **CAUTION:** To avoid data loss, save and close all open files and exit all open programs before turning off your computer.

- 1 Save and close all open files, exit all open programs, and turn off your computer. Point to the lower or upper-right corner of the screen to open the Charms sidebar and click **Settings**→ **Power**→ **Shut down**.

 **NOTE:** If you use a different operating system, see the documentation of your operating system for shut-down instructions.

- 2 After the computer shuts down, disconnect it from the electrical outlet.
- 3 Disconnect all cables — such as power and USB cables — from your computer.
- 4 Disconnect all peripherals connected to your computer.









Recommended Tools

The procedures in this document require the following tools:

- Phillips screwdriver
- Torx #5 (T5) screwdriver
- Plastic scribe

Safety Instructions

Use the following safety guidelines to protect your computer from potential damage and ensure your personal safety.

-  **WARNING:** Before working inside your computer, read the safety information that shipped with your computer. For more safety best practices, see the Regulatory Compliance home page at dell.com/regulatory_compliance.
-  **WARNING:** Disconnect all power sources before opening the computer cover or panels. After you finish working inside the computer, replace all covers, panels, and screws before connecting to the power source.
-  **CAUTION:** Only a certified service technician is authorized to remove the computer cover and access any of the components inside the computer. See the safety instructions for complete information about safety precautions, working inside your computer, and protecting against electrostatic discharge.
-  **CAUTION:** To avoid damaging the computer, make sure that the work surface is flat and clean.
-  **CAUTION:** When you disconnect a cable, pull on its connector or on its pull-tab, not on the cable itself. Some cables have connectors with locking tabs or thumb-screws that you must disengage before disconnecting the cable. When disconnecting cables, keep them evenly aligned to avoid bending any connector pins. When connecting cables, make sure that the ports and connectors are correctly oriented and aligned.
-  **CAUTION:** To avoid damaging the components and cards, handle them by their edges and avoid touching pins and contacts.
-  **CAUTION:** Before touching anything inside your computer, ground yourself by touching an unpainted metal surface, such as the metal at the back of the computer. While you work, periodically touch an unpainted metal surface to dissipate static electricity, which could harm internal components.
-  **CAUTION:** Press and eject any installed card from the media-card reader.

After Working Inside Your Computer



CAUTION: Leaving stray or loose screws inside your computer may severely damage your computer.

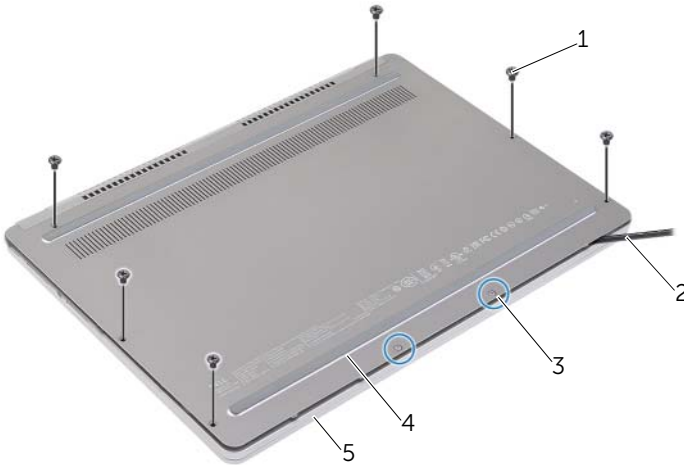
- 1** Replace all screws and make sure that no stray screws remain inside your computer.
- 2** Connect any cables, peripherals, and other parts you removed before working on your computer.
- 3** Connect your computer to the electrical outlet.
- 4** Turn on your computer.

Removing the Base Cover

⚠ WARNING: Before working inside your computer, read the safety information that shipped with your computer and follow the steps in "Before Working Inside Your Computer" on page 7. After working inside your computer, follow the instructions in "After Working Inside Your Computer" on page 9. For more safety best practices, see the Regulatory Compliance home page at dell.com/regulatory_compliance.

Procedure

- 1 Close the display, and turn the computer over.
- 2 Loosen the captive screws that secure the base cover to the palm-rest assembly.
- 3 Remove the screws that secure the base cover to the palm-rest assembly.
- 4 Using a plastic scribe, pry the base cover out of the palm-rest assembly.



1	screws (6)	2	plastic scribe
3	captive screws (2)	4	base cover
5	palm-rest assembly		

Replacing the Base Cover



WARNING: Before working inside your computer, read the safety information that shipped with your computer and follow the steps in "Before Working Inside Your Computer" on page 7. After working inside your computer, follow the instructions in "After Working Inside Your Computer" on page 9.

For more safety best practices, see the Regulatory Compliance home page at dell.com/regulatory_compliance.

Procedure

- 1 Slide the tabs on the base cover into the palm-rest assembly and snap the base cover into place.
- 2 Replace the screws that secure the base cover to the palm-rest assembly.
- 3 Tighten the captive screws that secure the base cover to the palm-rest assembly.
- 4 Turn the computer over, open the display, and turn on the computer.

Removing the Battery

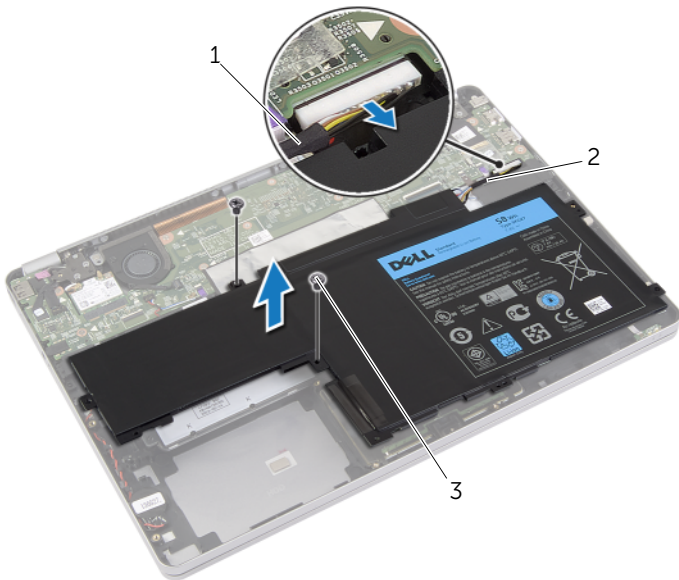
⚠ WARNING: Before working inside your computer, read the safety information that shipped with your computer and follow the steps in "Before Working Inside Your Computer" on page 7. After working inside your computer, follow the instructions in "After Working Inside Your Computer" on page 9. For more safety best practices, see the Regulatory Compliance home page at dell.com/regulatory_compliance.

Prerequisites

Remove the base cover. See "Removing the Base Cover" on page 10.

Procedure

- 1 Remove the screws that secure the battery to the palm-rest assembly.
- 2 Disconnect the battery cable from the system board.
- 3 Remove the cable from the routing guides on the palm-rest assembly.
- 4 Lift the battery off the palm-rest assembly.



1 routing guide

2 cable

3 screws (2)

- 5 Turn the computer over, open the display, and press the power button for about five seconds to ground the system board.

Replacing the Battery



WARNING: Before working inside your computer, read the safety information that shipped with your computer and follow the steps in "Before Working Inside Your Computer" on page 7. After working inside your computer, follow the instructions in "After Working Inside Your Computer" on page 9.

For more safety best practices, see the Regulatory Compliance home page at dell.com/regulatory_compliance.

Procedure

- 1 Align the screw holes on the battery with the screw holes on the palm-rest assembly.
- 2 Replace the screws that secure the battery to the palm-rest assembly.
- 3 Route the battery cable through the routing guides on the palm-rest assembly.
- 4 Connect the battery cable to the system board.

Postrequisites

Replace the base cover. See "Replacing the Base Cover" on page 11.

Removing the Speakers

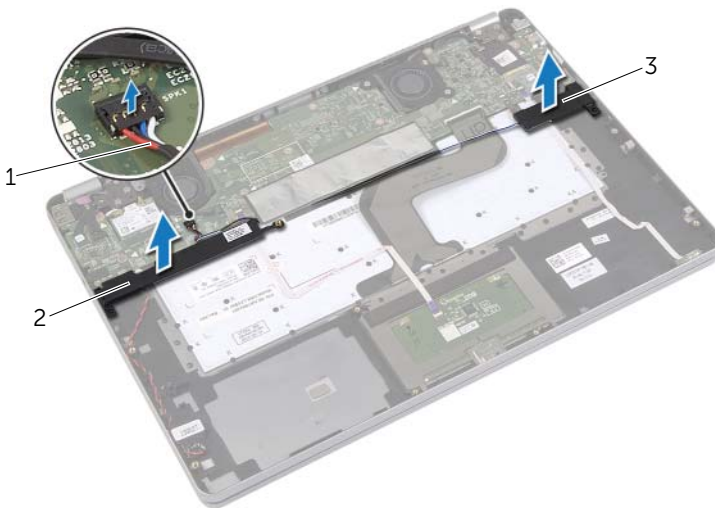
⚠ WARNING: Before working inside your computer, read the safety information that shipped with your computer and follow the steps in "Before Working Inside Your Computer" on page 7. After working inside your computer, follow the instructions in "After Working Inside Your Computer" on page 9. For more safety best practices, see the Regulatory Compliance home page at dell.com/regulatory_compliance.

Prerequisites

- 1 Remove the base cover. See "Removing the Base Cover" on page 10.
- 2 Remove the battery. See "Removing the Battery" on page 12.

Procedure

- 1 Disconnect the speaker cable from the system board.
- 2 Using a plastic scribe, gently pry out the right speaker out of the palm-rest assembly.
- 3 Remove the left-speaker cable from the routing guides on the palm-rest assembly.
- 4 Using a plastic scribe, gently pry out the left speaker out of the palm-rest assembly.



1 speaker cable

2 right speaker

3 left speaker

Replacing the Speakers



WARNING: Before working inside your computer, read the safety information that shipped with your computer and follow the steps in "Before Working Inside Your Computer" on page 7. After working inside your computer, follow the instructions in "After Working Inside Your Computer" on page 9.

For more safety best practices, see the Regulatory Compliance home page at dell.com/regulatory_compliance.

Procedure

- 1 Align the left speaker on the alignment posts and snap the speaker into place.
- 2 Route the left-speaker cable through the routing guides on the palm-rest assembly.
- 3 Align the right speaker on the alignment posts and snap the speaker into place.
- 4 Connect the speaker cable to the system board.

Postrequisites

- 1 Replace the battery. See "Replacing the Battery" on page 13.
- 2 Replace the base cover. See "Replacing the Base Cover" on page 11.

Removing the Wireless Card

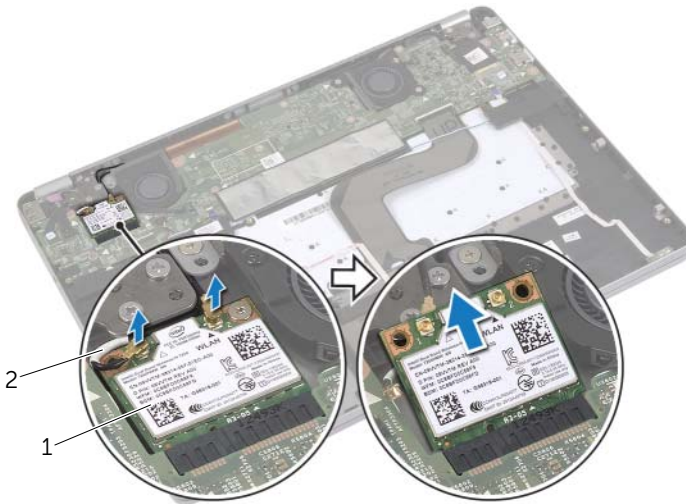
⚠ WARNING: Before working inside your computer, read the safety information that shipped with your computer and follow the steps in "Before Working Inside Your Computer" on page 7. After working inside your computer, follow the instructions in "After Working Inside Your Computer" on page 9. For more safety best practices, see the Regulatory Compliance home page at dell.com/regulatory_compliance.

Prerequisites

- 1 Remove the base cover. See "Removing the Base Cover" on page 10.
- 2 Remove the battery. See "Removing the Battery" on page 12.

Procedure

- 1 Disconnect the antenna cables from the wireless card.
- 2 Remove the screw to release the wireless card.
- 3 Remove the wireless card from the palm-rest assembly.



1 wireless card

2 antenna cables (2)

Replacing the Wireless Card



WARNING: Before working inside your computer, read the safety information that shipped with your computer and follow the steps in "Before Working Inside Your Computer" on page 7. After working inside your computer, follow the instructions in "After Working Inside Your Computer" on page 9.

For more safety best practices, see the Regulatory Compliance home page at dell.com/regulatory_compliance.

Procedure



CAUTION: To avoid damage to the wireless card, do not place any cables under it.

- 1 Align the notch on the wireless card with the tab on the wireless-card connector.
- 2 Insert the wireless card at a 45-degree angle into the wireless-card connector.
- 3 Press the other end of the wireless card down.
- 4 Replace the screw that secures the wireless card to the palm-rest assembly.
- 5 Connect the antenna cables to the wireless card.



NOTE: The color of the antenna cables is visible near the tip of the cables.

The following table provides the antenna-cable color scheme for the wireless card supported by your computer.

Connectors on the wireless card	Antenna-cable color
Main (white triangle)	white
Auxiliary (black triangle)	black

Postrequisites

- 1 Replace the battery. See "Replacing the Battery" on page 13.
- 2 Replace the base cover. See "Replacing the Base Cover" on page 11.

Removing the Coin-Cell Battery

⚠ WARNING: Before working inside your computer, read the safety information that shipped with your computer and follow the steps in "Before Working Inside Your Computer" on page 7. After working inside your computer, follow the instructions in "After Working Inside Your Computer" on page 9. For more safety best practices, see the Regulatory Compliance home page at dell.com/regulatory_compliance.

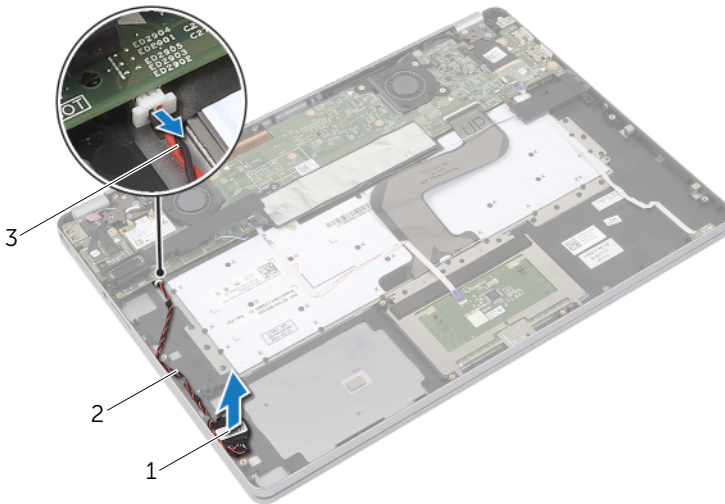
⚠ CAUTION: Removing the coin-cell battery resets the BIOS settings to default. It is recommended that you note the BIOS settings before removing the coin-cell battery.

Prerequisites

- 1 Remove the base cover. See "Removing the Base Cover" on page 10.
- 2 Remove the battery. See "Removing the Battery" on page 12.

Procedure


- 1 Follow step 1 and step 2 from "Removing the Speakers" on page 14.
- 2 Disconnect the coin-cell battery cable from the system board.




1	coin-cell battery	2	routing guide
3	coin-cell battery cable		

- 3 Remove the cable from the routing guides on the palm-rest assembly.
- 4 Remove the coin-cell battery from the palm-rest assembly.

Replacing the Coin-Cell Battery

 **WARNING:** Before working inside your computer, read the safety information that shipped with your computer and follow the steps in "Before Working Inside Your Computer" on page 7. After working inside your computer, follow the instructions in "After Working Inside Your Computer" on page 9. For more safety best practices, see the Regulatory Compliance home page at dell.com/regulatory_compliance.

 **WARNING:** The battery may explode if installed incorrectly. Replace the battery only with the same or equivalent type. Discard used batteries according to the manufacturer's instructions.

Procedure

- 1 Place the coin-cell battery into its position on the palm-rest assembly.
- 2 Route the coin-cell cable through the routing guides on the palm-rest assembly.
- 3 Connect the coin-cell battery cable to the system board.
- 4 Follow step 3 and step 4 from "Replacing the Speakers" on page 15.

Postrequisites

- 1 Replace the battery. See "Replacing the Battery" on page 13.
- 2 Replace the base cover. See "Replacing the Base Cover" on page 11.

Removing the Fan

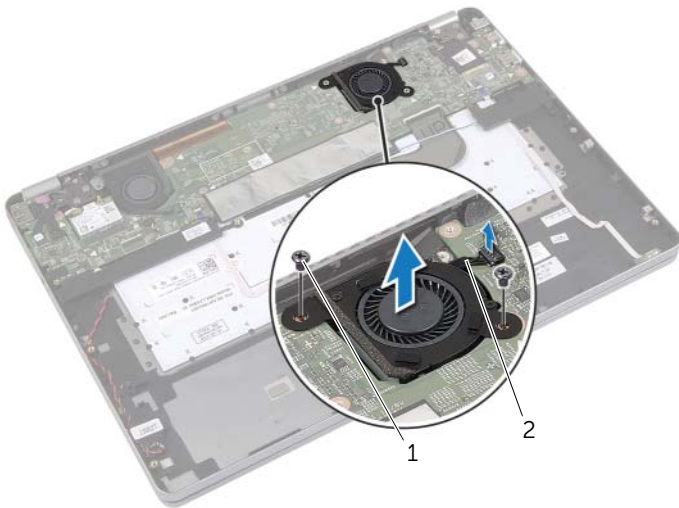
⚠ WARNING: Before working inside your computer, read the safety information that shipped with your computer and follow the steps in "Before Working Inside Your Computer" on page 7. After working inside your computer, follow the instructions in "After Working Inside Your Computer" on page 9. For more safety best practices, see the Regulatory Compliance home page at dell.com/regulatory_compliance.

Prerequisites

- 1 Remove the base cover. See "Removing the Base Cover" on page 10.
- 2 Remove the battery. See "Removing the Battery" on page 12.

Procedure

- 1 Remove the screws that secure the fan to the system board.
- 2 Disconnect the fan cable from the system board.



1 screws(2)

2 fan cable

Replacing the Fan



WARNING: Before working inside your computer, read the safety information that shipped with your computer and follow the steps in "Before Working Inside Your Computer" on page 7. After working inside your computer, follow the instructions in "After Working Inside Your Computer" on page 9.

For more safety best practices, see the Regulatory Compliance home page at dell.com/regulatory_compliance.

Procedure

- 1 Align the screws on the fan with the screw holes on the system board.
- 2 Replace the screws that secure the fan to the system board.
- 3 Connect the fan cable to the system board.

Postrequisites

- 1 Replace the battery. See "Replacing the Battery" on page 13.
- 2 Replace the base cover. See "Replacing the Base Cover" on page 11.

Removing the Power-Adapter Port

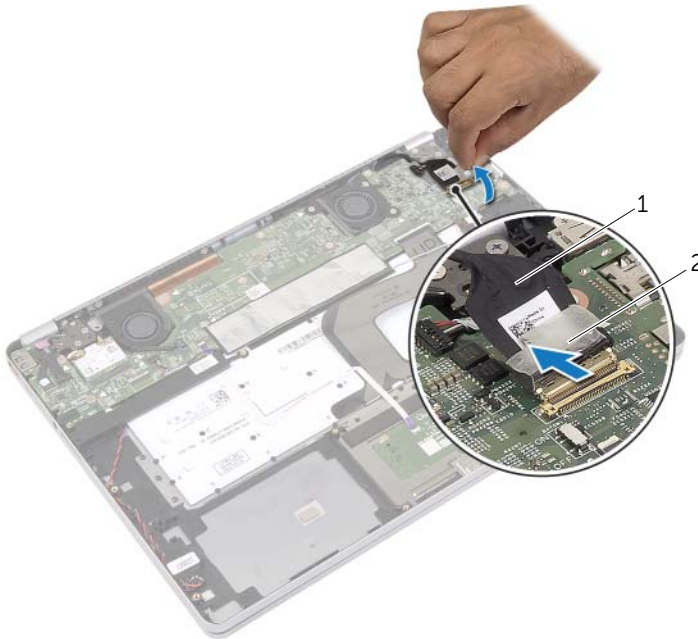
⚠ WARNING: Before working inside your computer, read the safety information that shipped with your computer and follow the steps in "Before Working Inside Your Computer" on page 7. After working inside your computer, follow the instructions in "After Working Inside Your Computer" on page 9. For more safety best practices, see the Regulatory Compliance home page at dell.com/regulatory_compliance.

Prerequisites

- 1 Remove the base cover. See "Removing the Base Cover" on page 10.
- 2 Remove the battery. See "Removing the Battery" on page 12.

Procedure

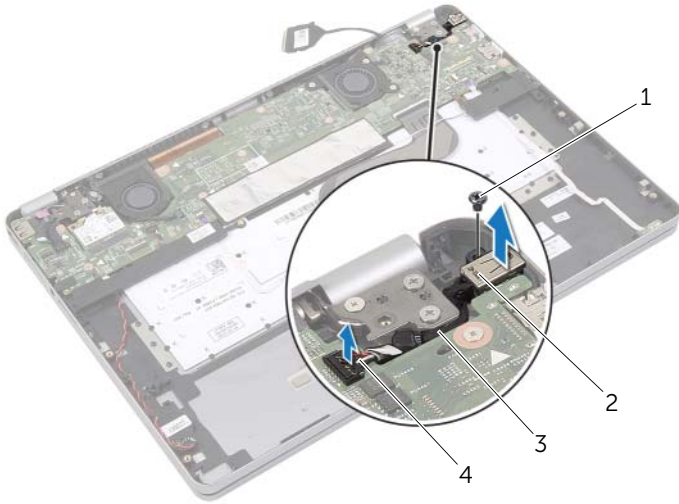
- 1 Peel off the tape that secures the display cable to the system board.
- 2 Disconnect the display cable from the system board.



1 display cable

2 tape

- 3 Disconnect the power-adapter cable from the system board.
- 4 Remove the screw that secures the power-adapter board to the palm-rest assembly.
- 5 Remove the cable from the routing guides on the palm-rest assembly.
- 6 Lift the power-adapter port off the palm-rest assembly.



1	screw	2	power-adapter port
3	routing guide	4	power-adapter port cable

Replacing the Power-Adapter Port



WARNING: Before working inside your computer, read the safety information that shipped with your computer and follow the steps in "Before Working Inside Your Computer" on page 7. After working inside your computer, follow the instructions in "After Working Inside Your Computer" on page 9.

For more safety best practices, see the Regulatory Compliance home page at dell.com/regulatory_compliance.

Procedure

- 1 Route the power-adapter port cable through the routing guides on the palm-rest assembly.
- 2 Connect the power-adapter port cable to the system board.
- 3 Align the screw hole on the power-adapter port with the screw hole on the palm-rest assembly.
- 4 Replace the screw that secures the power-adapter port to the palm-rest assembly.
- 5 Connect the display cable to the system board.
- 6 Adhere the tape to the display cable.

Postrequisites

- 1 Replace the battery. See "Replacing the Battery" on page 13.
- 2 Replace the base cover. See "Replacing the Base Cover" on page 11.

Removing the System Board



WARNING: Before working inside your computer, read the safety information that shipped with your computer and follow the steps in "Before Working Inside Your Computer" on page 7. After working inside your computer, follow the instructions in "After Working Inside Your Computer" on page 9.

For more safety best practices, see the Regulatory Compliance home page at dell.com/regulatory_compliance.

Prerequisites

- 1 Remove the base cover. See "Removing the Base Cover" on page 10.
- 2 Remove the battery. See "Removing the Battery" on page 12.
- 3 Remove the wireless card. See "Removing the Wireless Card" on page 16.
- 4 Remove the fan. See "Removing the Fan" on page 20.
- 5 Remove the speakers. See "Removing the Speakers" on page 14.

Procedure



NOTE: Replacing the system board removes any changes you have made to the BIOS using System Setup. Enter the Service Tag of your computer in the BIOS and make the desired changes again after you replace the system board.

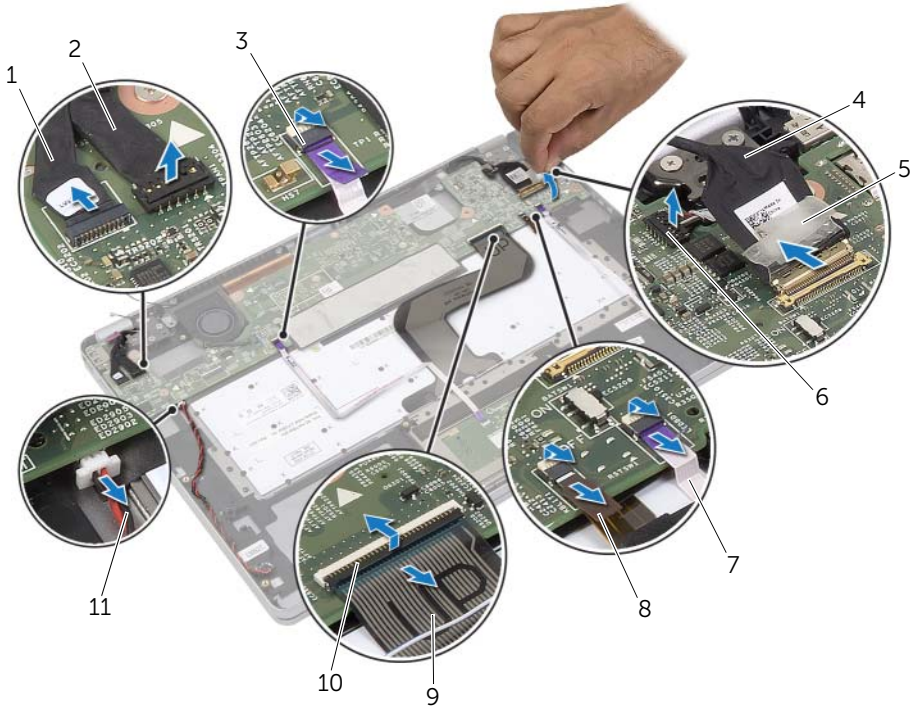
For more information on entering the Service Tag in the BIOS, see "Replacing the System Board" on page 28.



NOTE: Before disconnecting the cables from the system board, note the location of the connectors so that you can reconnect them correctly after you replace the system board.

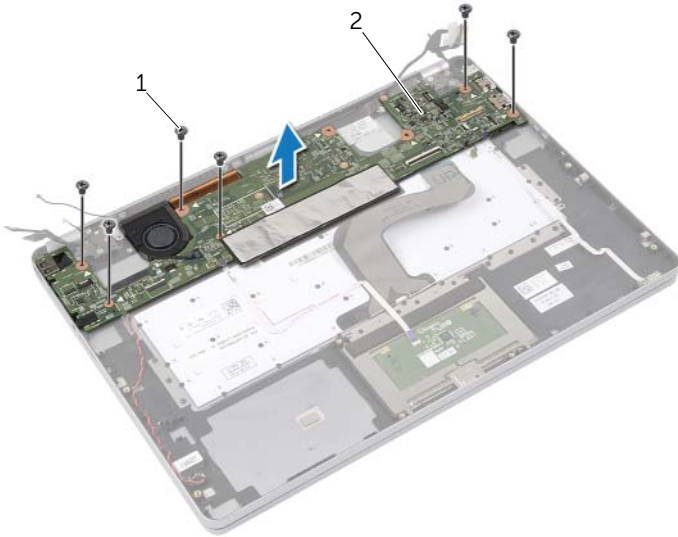
- 1 Disconnect the camera cable, touch-panel cable, and coin-cell battery cable from the system board.
- 2 Release the latches that secure the touchpad cable, keyboard cable, keyboard-backlight cable, and battery and hard-drive activity status light cable from the system board.

- 3 Peel off the tape and disconnect the display cable from the system board.
- 4 Disconnect the power-adaptor port cable.



1	camera cable	2	touch-panel cable
3	touchpad cable	4	display cable
5	tape	6	power-adaptor port cable
7	battery and hard-drive activity status light cable	8	keyboard-backlight cable
9	keyboard cable	10	connector latches (4)
11	coin-cell battery cable		


- 5 Remove the screws that secure the system board to the palm-rest assembly.
- 6 Lift the system board off the palm-rest assembly.
- 7 Remove the mSATA card. See "Removing the mSATA Card" on page 29.
- 8 Remove the Thermal-Cooling Assembly. See "Removing the Thermal-Cooling Assembly" on page 31.




1 screws (6)

2 system board

Replacing the System Board

-  **WARNING:** Before working inside your computer, read the safety information that shipped with your computer and follow the steps in "Before Working Inside Your Computer" on page 7. After working inside your computer, follow the instructions in "After Working Inside Your Computer" on page 9. For more safety best practices, see the Regulatory Compliance home page at dell.com/regulatory_compliance.

Procedure

-  **CAUTION:** Make sure that no cables are placed under the system board.
- 1 Replace the Thermal-Cooling Assembly. See "Replacing the Thermal-Cooling Assembly" on page 33.
 - 2 Replace the mSATA card. See "Replacing the mSATA Card" on page 30.
 - 3 Slide the headset port into the slot on the palm-rest assembly and align the screw holes on the system board with the screw holes on the palm-rest assembly.
 - 4 Replace the screws that secure the system board to the palm-rest assembly.
 - 5 Connect the power-adapter port cable.
 - 6 Slide the display cable into the system board and press down on the connector latch to secure the cable.
 - 7 Adhere the tape to the display cable.
 - 8 Slide the touchpad cable, keyboard cable, keyboard-backlight cable, and battery and hard-drive activity status light cable into the system board and press down on the connector latches to secure the cables.
 - 9 Connect the camera cable, touch-panel cable, and coin-cell battery cable to the system board.

Postrequisites

- 1 Replace the speakers. See "Replacing the Speakers" on page 15.
- 2 Replace the fan. See "Replacing the Fan" on page 21.
- 3 Replace the wireless card. See "Replacing the Wireless Card" on page 17.
- 4 Replace the battery. See "Replacing the Battery" on page 13.
- 5 Replace the base cover. See "Replacing the Base Cover" on page 11.

Entering the Service Tag in the BIOS

- 1 Turn on the computer.
- 2 At the Dell logo, press <F2> to enter System Setup.
- 3 Navigate to the **Main** tab and type the Service Tag in the **Service Tag** field.

Removing the mSATA Card

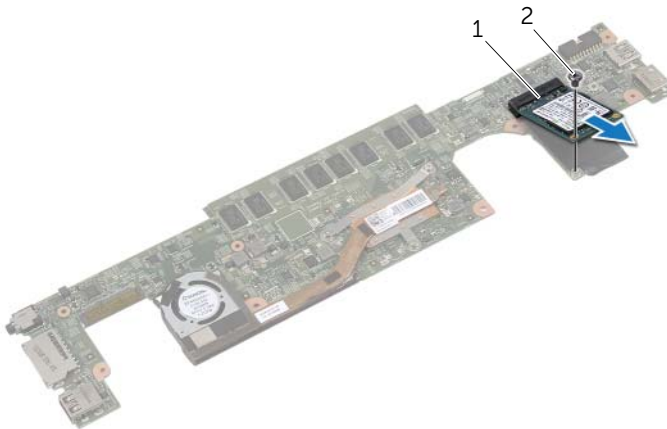
⚠ WARNING: Before working inside your computer, read the safety information that shipped with your computer and follow the steps in "Before Working Inside Your Computer" on page 7. After working inside your computer, follow the instructions in "After Working Inside Your Computer" on page 9. For more safety best practices, see the Regulatory Compliance home page at dell.com/regulatory_compliance.

Prerequisites

- 1 Remove the base cover. See "Removing the Base Cover" on page 10.
- 2 Remove the battery. See "Removing the Battery" on page 12.
- 3 Remove the wireless card. See "Removing the Wireless Card" on page 16.
- 4 Remove the fan. See "Removing the Fan" on page 20.
- 5 Remove the speakers. See "Removing the Speakers" on page 14.

Procedure

- 1 Follow the step 1 to step 6 from "Removing the System Board" on page 25.
- 2 Flip the system board.
- 3 Remove the screw to release the mSATA card.
- 4 Remove the mSATA card from the system board.



1 mSATA

2 screw

Replacing the mSATA Card



WARNING: Before working inside your computer, read the safety information that shipped with your computer and follow the steps in "Before Working Inside Your Computer" on page 7. After working inside your computer, follow the instructions in "After Working Inside Your Computer" on page 9.

For more safety best practices, see the Regulatory Compliance home page at dell.com/regulatory_compliance.

Procedure

- 1 Align the notch on the mSATA card with the tab on the mSATA-card connector.
- 2 Insert the mSATA card at a 45-degree angle into the mSATA-card connector.
- 3 Press the other end of the mSATA card down.
- 4 Align the screw hole on the mSATA card with the screw hole on the system board.
- 5 Replace the screw that secures the mSATA card to the system board.
- 6 Flip the system board.
- 7 Follow the step 3 to step 9 from "Replacing the System Board" on page 28.

Postrequisites

- 1 Replace the speakers. See "Replacing the Speakers" on page 15.
- 2 Replace the fan. See "Replacing the Fan" on page 21.
- 3 Replace the wireless card. See "Replacing the Wireless Card" on page 17.
- 4 Replace the battery. See "Replacing the Battery" on page 13.
- 5 Replace the base cover. See "Replacing the Base Cover" on page 11.

Removing the Thermal-Cooling Assembly

⚠ WARNING: Before working inside your computer, read the safety information that shipped with your computer and follow the steps in "Before Working Inside Your Computer" on page 7. After working inside your computer, follow the instructions in "After Working Inside Your Computer" on page 9. For more safety best practices, see the Regulatory Compliance home page at dell.com/regulatory_compliance.

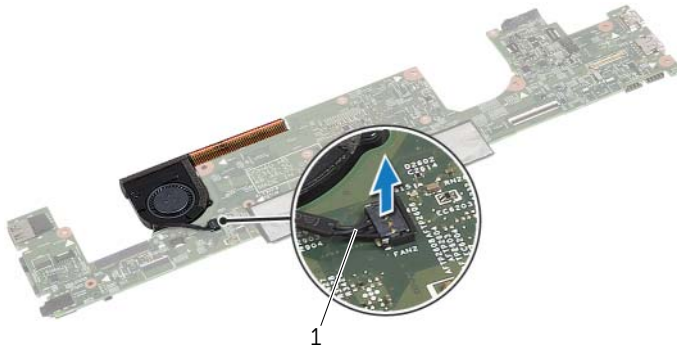
Prerequisites

- 1 Remove the base cover. See "Removing the Base Cover" on page 10.
- 2 Remove the battery. See "Removing the Battery" on page 12.
- 3 Remove the wireless card. See "Removing the Wireless Card" on page 16.
- 4 Remove the fan. See "Removing the Fan" on page 20.
- 5 Remove the speakers. See "Removing the Speakers" on page 14.

Procedure

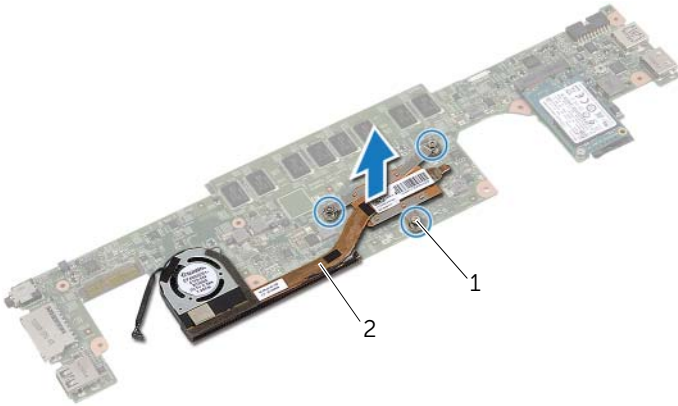
✎ NOTE: The number of screws and the shape of the thermal-cooling assembly vary for systems shipping with integrated graphics card.

- 1 Follow the step 1 to step 6 from "Removing the System Board" on page 25.
- 2 Disconnect the fan cable from the system board.



1 fan cable

- 3 Flip the system board.
- 4 In sequential order, (indicated on the cooling assembly), loosen the captive screws that secure the thermal-cooling assembly to the system board.
- 5 Lift the thermal-cooling assembly off the system board.



1	captive screws (3)	2	thermal-cooling assembly
---	--------------------	---	--------------------------

Replacing the Thermal-Cooling Assembly



WARNING: Before working inside your computer, read the safety information that shipped with your computer and follow the steps in "Before Working Inside Your Computer" on page 7. After working inside your computer, follow the instructions in "After Working Inside Your Computer" on page 9.

For more safety best practices, see the Regulatory Compliance home page at dell.com/regulatory_compliance.

Procedure

- 1 Align the screws on the thermal-cooling assembly with the screw holes on the system board.
- 2 In sequential order, (indicated on the cooling assembly), tighten the captive screws that secure the thermal-cooling assembly to the system board.
- 3 Connect the fan cable to the system board.
- 4 Flip the system board.
- 5 Follow the step 3 to step 9 from "Replacing the System Board" on page 28.

Postrequisites

- 1 Replace the speakers. See "Replacing the Speakers" on page 15.
- 2 Replace the fan. See "Replacing the Fan" on page 21.
- 3 Replace the wireless card. See "Replacing the Wireless Card" on page 17.
- 4 Replace the battery. See "Replacing the Battery" on page 13.
- 5 Replace the base cover. See "Replacing the Base Cover" on page 11.

Removing the Keyboard

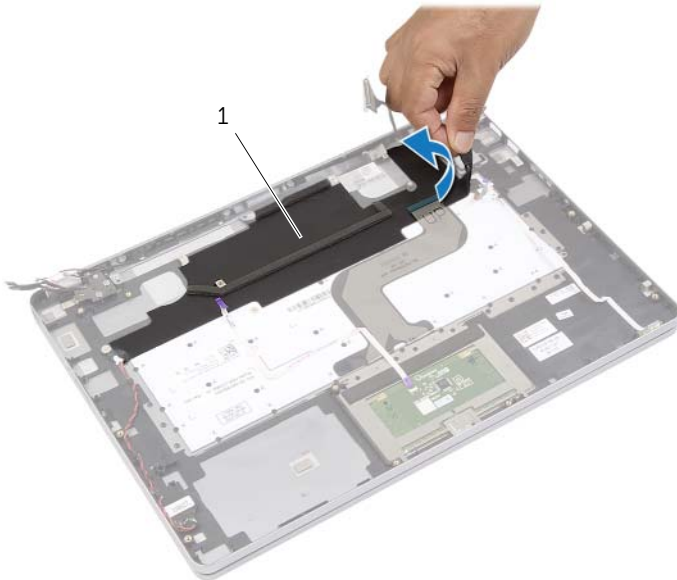
⚠ WARNING: Before working inside your computer, read the safety information that shipped with your computer and follow the steps in "Before Working Inside Your Computer" on page 7. After working inside your computer, follow the instructions in "After Working Inside Your Computer" on page 9. For more safety best practices, see the Regulatory Compliance home page at dell.com/regulatory_compliance.

Prerequisites

- 1 Remove the base cover. See "Removing the Base Cover" on page 10.
- 2 Remove the battery. See "Removing the Battery" on page 12.
- 3 Remove the wireless card. See "Removing the Wireless Card" on page 16.
- 4 Remove the fan. See "Removing the Fan" on page 20.
- 5 Remove the speakers. See "Removing the Speakers" on page 14.
- 6 Remove the system board. See "Removing the System Board" on page 25.

Procedure

- 1 Peel off the Mylar on the palm-rest assembly to reveal the keyboard screws.



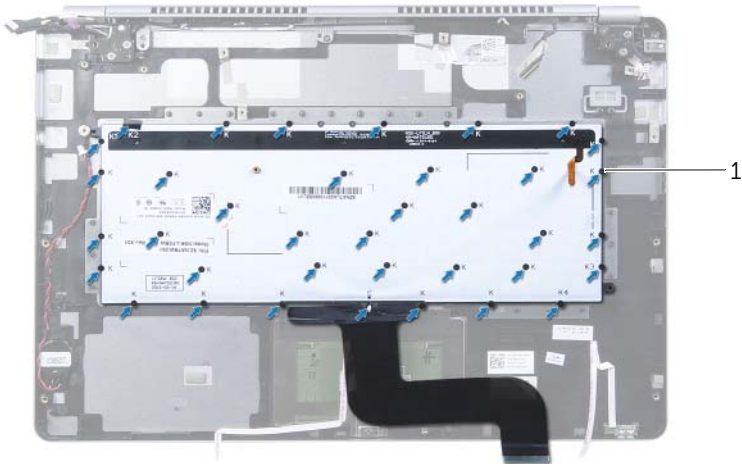
1 mylar

2 Peel off all the cables stuck on the keyboard.



1 cables (3)

3 Remove the screws that secure the keyboard to the palm-rest assembly.



1 screws (37)

4 Lift and remove the keyboard from the palm-rest assembly.

Replacing the Keyboard



WARNING: Before working inside your computer, read the safety information that shipped with your computer and follow the steps in "Before Working Inside Your Computer" on page 7. After working inside your computer, follow the instructions in "After Working Inside Your Computer" on page 9.

For more safety best practices, see the Regulatory Compliance home page at dell.com/regulatory_compliance.

Procedure

- 1 Align the screw holes on the keyboard with the screw holes on the palm-rest assembly.
- 2 Replace the screws that secure the keyboard to the palm-rest assembly.
- 3 Adhere all cables on the keyboard.
- 4 Adhere the Mylar on the keyboard and palm-rest assembly.

Postrequisites.

- 1 Replace the system board. See "Replacing the System Board" on page 28.
- 2 Replace the speakers. See "Replacing the Speakers" on page 15.
- 3 Replace the fan. See "Replacing the Fan" on page 21.
- 4 Replace the wireless card. See "Replacing the Wireless Card" on page 17.
- 5 Replace the battery. See "Replacing the Battery" on page 13.
- 6 Replace the base cover. See "Replacing the Base Cover" on page 11.

Removing the Display Assembly

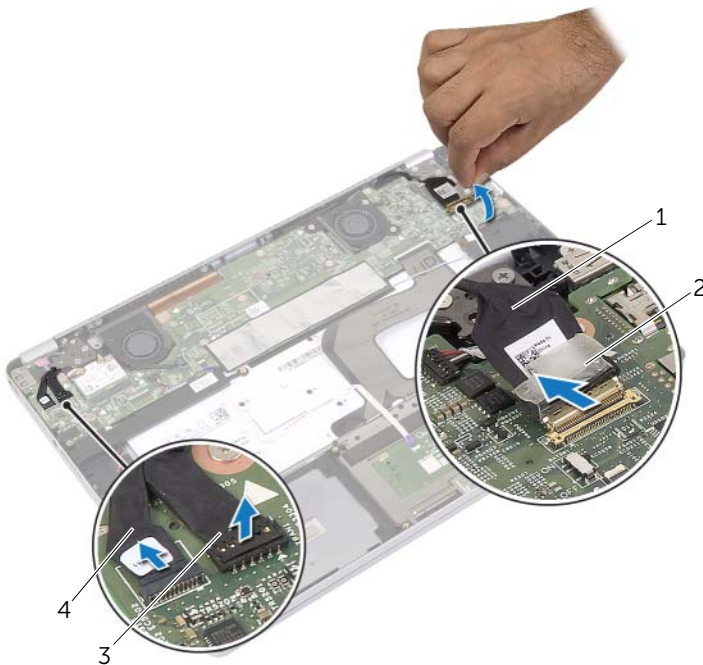
⚠ WARNING: Before working inside your computer, read the safety information that shipped with your computer and follow the steps in "Before Working Inside Your Computer" on page 7. After working inside your computer, follow the instructions in "After Working Inside Your Computer" on page 9. For more safety best practices, see the Regulatory Compliance home page at dell.com/regulatory_compliance.

Prerequisites

- 1 Remove the base cover. See "Removing the Base Cover" on page 10.
- 2 Remove the battery. See "Removing the Battery" on page 12.

Procedure

- 1 Peel off the tape and disconnect the display cable from the system board.
- 2 Disconnect the touch panel and camera cable from the system board.



1	display cable	2	tape
3	touch-panel cable	4	camera cable

- 3 Open the palm-rest assembly to an angle of 180 degrees.



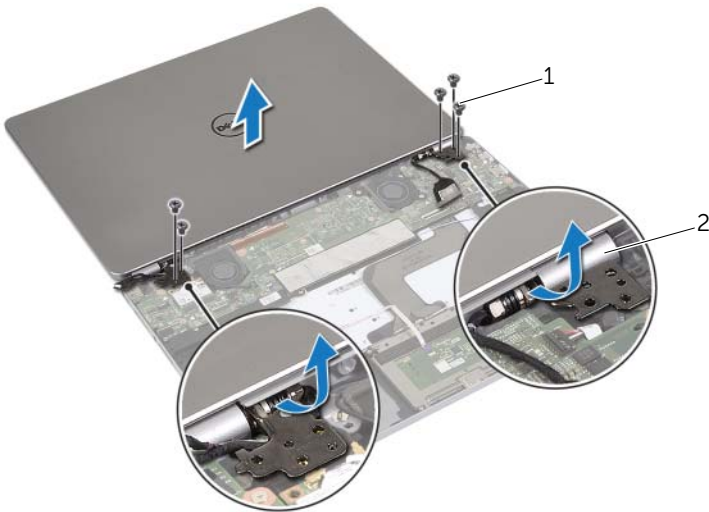
 **CAUTION:** To avoid scratching the computer display, make sure that the work surface is flat and clean.

4 Flip the computer over.



5 Remove the screws that secure the right and left display hinges to the palm-rest assembly.

6 Release the display hinges from the palm-rest assembly.



1 screws (5)

2 display-hinges (2)

- 7 Remove the display assembly from the palm-rest assembly.

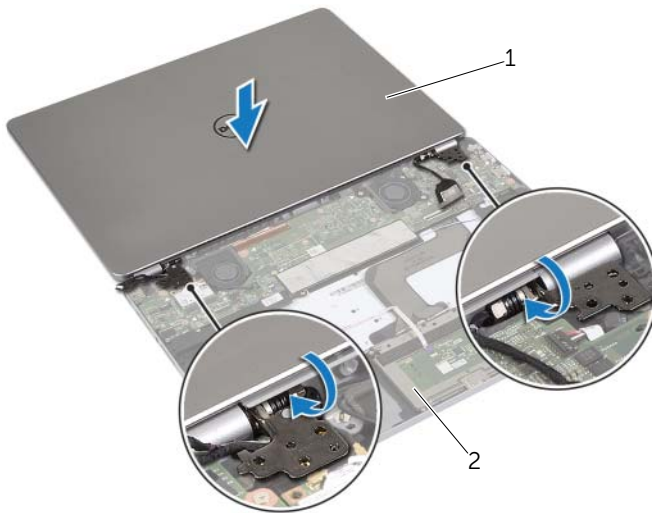


Replacing the Display Assembly

⚠ WARNING: Before working inside your computer, read the safety information that shipped with your computer and follow the steps in "Before Working Inside Your Computer" on page 7. After working inside your computer, follow the instructions in "After Working Inside Your Computer" on page 9. For more safety best practices, see the Regulatory Compliance home page at dell.com/regulatory_compliance.

Procedure

- 1 Place the display assembly on the palm-rest assembly.



1 display assembly

2 palm-rest assembly

- 2 Align the screw holes on the display hinges with the screw holes on the palm-rest assembly.
- 3 Replace the screws that secure the display hinges to the palm-rest assembly.
- 4 Route the camera and touch-panel cable through the routing guides on the palm-rest assembly.
- 5 Connect camera and touch-panel cable to the system board.
- 6 Connect display cable to system board.
- 7 Adhere the tape to secure the display cable.

Postrequisites

- 1 Replace the battery. See "Replacing the Battery" on page 13.
- 2 Replace the base cover. See "Replacing the Base Cover" on page 11.

Removing the Palm Rest

⚠ WARNING: Before working inside your computer, read the safety information that shipped with your computer and follow the steps in "Before Working Inside Your Computer" on page 7. After working inside your computer, follow the instructions in "After Working Inside Your Computer" on page 9. For more safety best practices, see the Regulatory Compliance home page at dell.com/regulatory_compliance.

Prerequisites

- 1 Remove the base cover. See "Removing the Base Cover" on page 10.
- 2 Remove the battery. See "Removing the Battery" on page 12.
- 3 Remove the wireless card. See "Removing the Wireless Card" on page 16.
- 4 Remove the fan. See "Removing the Fan" on page 20.
- 5 Remove the speakers. See "Removing the Speakers" on page 14.
- 6 Remove the system board. See "Removing the System Board" on page 25.
- 7 Remove the keyboard. See "Removing the Keyboard" on page 34.

Procedure

- 1 Open the palm-rest assembly to an angle of 180 degrees.



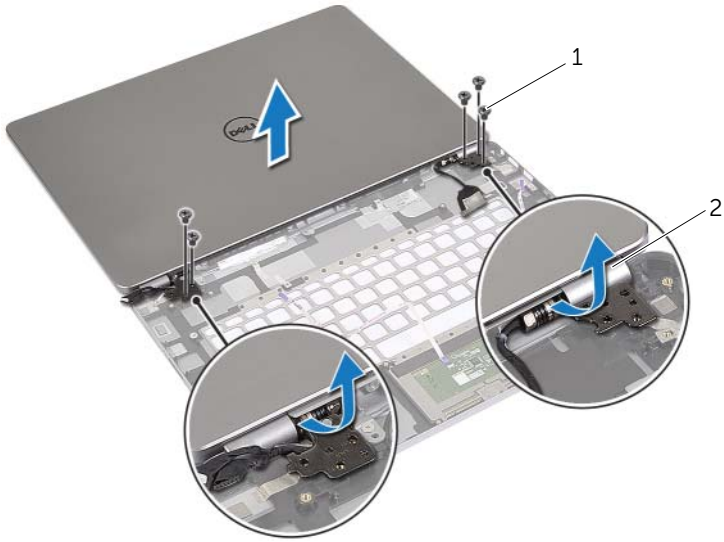


CAUTION: To avoid scratching the computer display, make sure that the work surface is flat and clean.

- 2 Flip the computer over.



- 3 Remove the screws that secure the right and left display hinges to the palm-rest assembly.
- 4 Release the display hinges from the palm-rest assembly.



1 screws (5)

2 display-hinges (2)

- 5 Remove the palm-rest assembly from the display assembly.



Replacing the Palm Rest

⚠ WARNING: Before working inside your computer, read the safety information that shipped with your computer and follow the steps in "Before Working Inside Your Computer" on page 7. After working inside your computer, follow the instructions in "After Working Inside Your Computer" on page 9. For more safety best practices, see the Regulatory Compliance home page at dell.com/regulatory_compliance.

Procedure

- 1 Place the display assembly on the palm-rest assembly.



1 display assembly

2 palm-rest assembly

- 2 Align the screw holes on the palm-rest assembly with the screw holes on the display hinges.
- 3 Replace the screws that secure the display hinges to the palm-rest assembly.

Postrequisites

- 1 Replace the keyboard. See "Replacing the Keyboard" on page 36.
- 2 Replace the system board. See "Replacing the System Board" on page 28.
- 3 Replace the speakers. See "Replacing the Speakers" on page 15.
- 4 Replace the fan. See "Replacing the Fan" on page 21.
- 5 Replace the wireless card. See "Replacing the Wireless Card" on page 17.
- 6 Replace the battery. See "Replacing the Battery" on page 13.
- 7 Replace the base cover. See "Replacing the Base Cover" on page 11.

Flashing the BIOS

You may need to flash (update) the BIOS when an update is available or when you replace the system board. To flash the BIOS:

- 1 Turn on the computer.
- 2 Go to **dell.com/support**.
- 3 If you have your computer's Service Tag, type your computer's Service Tag and click **Submit**.

If you do not have your computer's Service Tag, click **Detect Service Tag** to allow automatic detection of the Service Tag.



NOTE: If the Service Tag cannot be detected automatically, select your product under the product categories.

- 4 Click **Drivers and Downloads**.
- 5 In the **Operating System** drop-down, select the operating system installed on your computer.
- 6 Click **BIOS**.
- 7 Click **Download File** to download the latest version of the BIOS for your computer.
- 8 On the next page, select **Single-file download** and click **Continue**.
- 9 Save the file and once the download is complete, navigate to the folder where you saved the BIOS update file.
- 10 Double-click the BIOS update file icon and follow the instructions on the screen.